

RT



**REA
TAPE**

PRODUCT CATALOG



KINESIOLOGY TAPING

REA TAPE CLASSIC

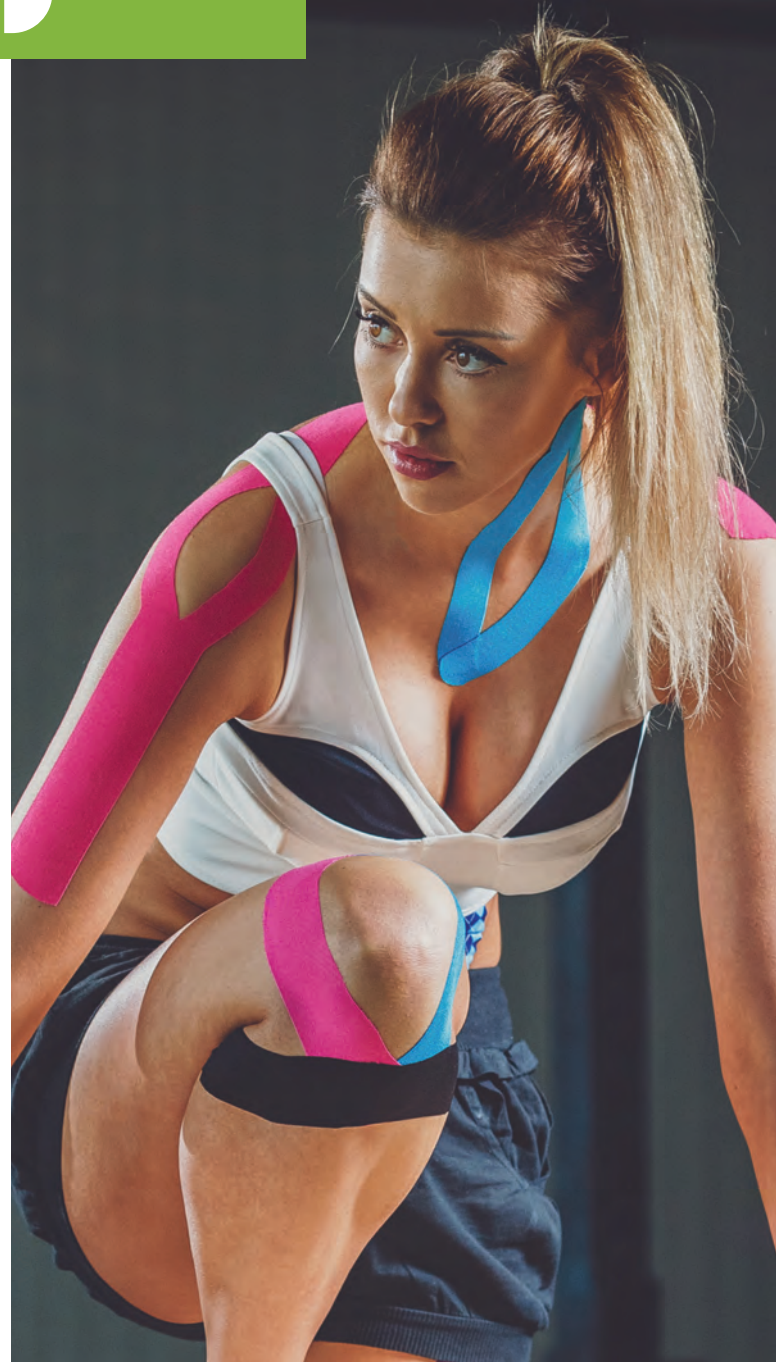
Size: 5m x 5cm | 16ft 4in x 2in

Fabric: 100% cotton

Colours:

Package: 1 roll in a box / 6-pack display / 120 carton

REA TAPE CLASSIC Kinesiology Tape is a professionally engineered, dynamic therapeutic kinesiology support for all body areas. REA TAPE gives support for injured structures without compromising a healthy range of motion. REA TAPE provides neurosensory feedback so that you do not feel pain or discomfort as much or at all, which then helps to activate the neuromuscular response and activation of muscles providing THERAPEUTIC TREATMENT 24/7



endless
possibilities



KINESIOLOGY TAPING

REA TAPE PREMIUM

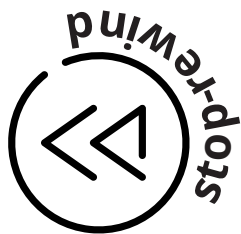
Size: 5m x 5cm | 16ft 4in x 2in

Fabric: 100% rayon

Colours:

Package: 1 roll in a stop-rewind box / 80 carton

REA TAPE PREMIUM is made from extraordinary silky smooth shiny delicate fabric that is extra comfortable to wear, extra gentle and extra strong. This tape is specially designed and dedicated for toughest workouts and extreme weather conditions including high humidity and low temperatures.



premium fabric
stop-rewind system





REA TAPE PATTERN

Size: 5m x 5cm | 16ft 4in x 2in

Fabric: 100% cotton

Patterns :

Package: 1 roll in a box / 6-pack display / 120 carton

R EA TAPE PATTERN is the first kinesiology tape designed to brighten up your day with its unique vivid designs and soft cotton fabric. Thanks to the attributes of classic kinesiology tape and original patterns it will quickly become your favorite. REA TAPE PATTERN is suitable for kids and young-at-heart grown-ups!

**express
yourself**

funky patterns





**extra
strong glue**

**stickier
than ever**

REA TAPE ULTRA STRONG

Size: 5m x 5cm | 16ft 4in x 2in

Fabric: 100% cotton

Colours: 

Package: 1 roll in a box / 6-pack display / 120 carton

REA TAPE ULTRA STRONG is dedicated for crossfit maniacs and extreme sports enthusiasts. This tape is stickier than any other brand of kinesiology tape helping you to perform at your best with confidence. Extra strong adhesive won't be beaten by sweat or water making you unstoppable in any condition or climate.





REA TAPE PROTECT

Size: 5m x 5cm | 16ft 4in x 2in

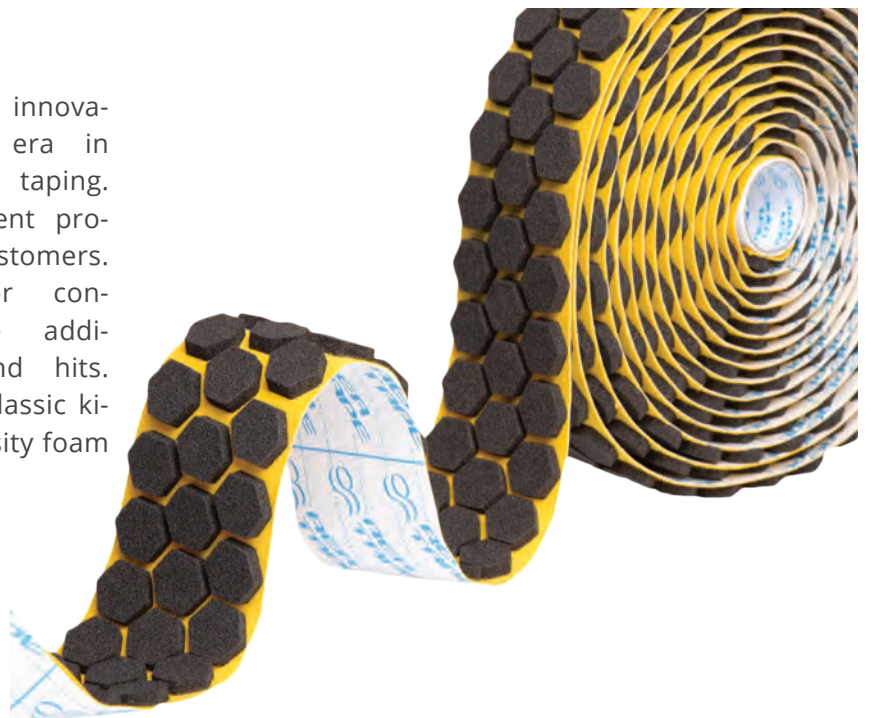
Fabric: 100% cotton with high density foam hexagons

Colours: 

Package: 1 roll in a box / 20 rolls in carton

REA TAPE PROTECT is an innovative tape that opens a new era in the world of kinesiology taping. This is an exceptional tape under a patent protection available only to REA TAPE customers. REA TAPE PROTECT is designed for contact sports enthusiasts who require additional protection during their kicks and hits. REA TAPE PROTECT is a unique fusion of classic kinesiology tape that is reinforced by high-density foam hexagons that absorb the impact energy.

NEW
patent



REA TAPE OCTOPUS

Size: 5cm x 30cm | 7cm x 30cm

2in x 11.8in | 2.75in x 11.8in

Fabric: 100% cotton

Colours:

REA TAPE OCTOPUS is kinesiology tape dedicated for lymphatic drainage. Tape is supplied in super convenient pieces that allow fast and scissors free application. Since every piece is already 'machine precut' all the edges are neatly and evenly cut giving you outstanding results.

**wild
tentacles**

wrap sharp





Let's stretch
this stuff

REA TAPE BIONIC

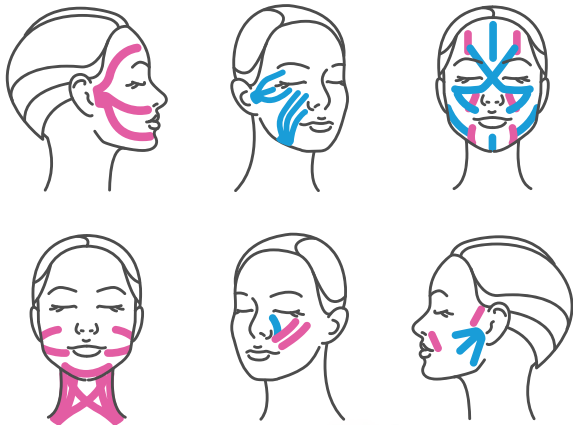
Size: 5m x 5cm | 16ft 4in x 2in

Fabric: 85% nylon, 15% spandex

Package: 1 roll in a box / 6-pack display / 120 carton

REA BIONIC TAPE is designed to stretch in all direction (4-way stretch) while kinesiology tapes are designed to stretch only longitudinally (2-way stretch). Thanks to 4-way stretch Bionic Tape gains the ability to absorb load and re-inject that energy back into movement, all without limiting range of motion. Kinesiology tapes are designed to do neurophysiological work, meaning they interface with the skin to alter pain perception, address lymphatic drainage, and encourage changes in neuromuscular function..





REA TAPE BEAUTY

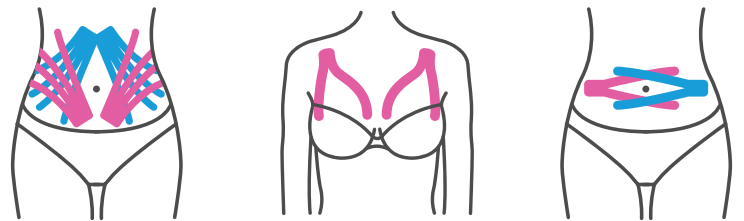
Size: 5m x 5cm | 16ft 4in x 2in

Fabric: 100% cotton

Package: 1 roll in a box / 6-pack display / 120 carton

REA TAPE BEAUTY with unique gentle adhesive formula is dedicated for sensitive and delicate skin whilst proves itself with a strong hold - carefully crafted for beauty applications.

beauty lies
skin deep





REA TAPE BRA

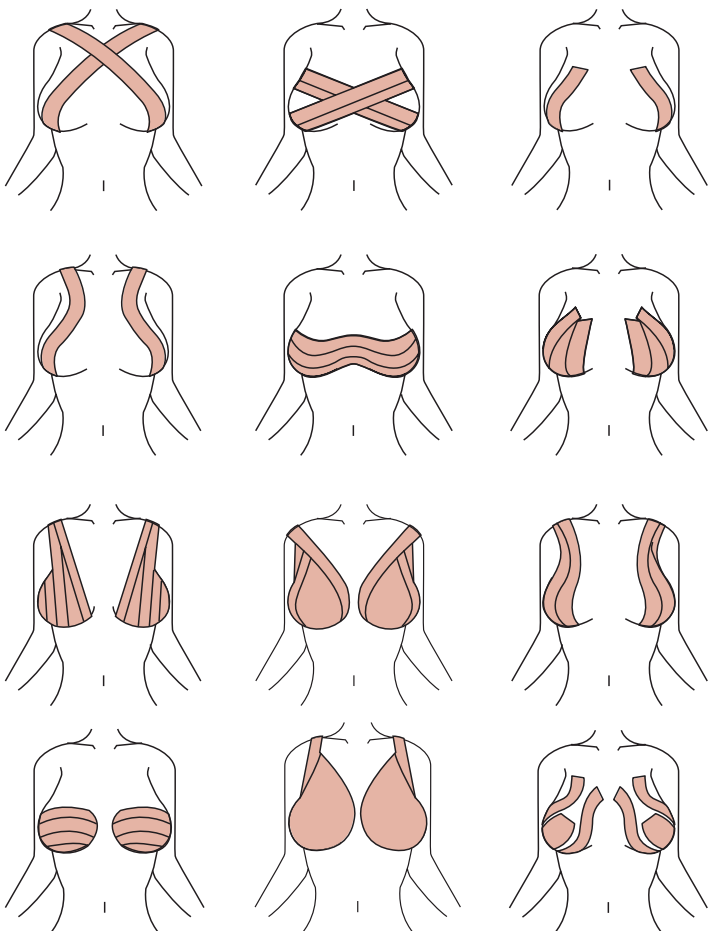
Size: 5m x 5cm | 16ft 4in x 2in

Fabric: 100% cotton

Included: 10 x nipple cover

Package: 1 roll in a box

REA TAPE BRA is a breast lifting tape that provides reliable support that can help you shape a perfect body curve. Tailorable design allows you to adjust the length of the tape according to actual needs to make it invisible under clothes. Suitable for large or small breasts. The best choice while wearing backless dress, off shoulder top or swimwear.



one roll
many ways





when more
stickiness is
needed

REA TAPE GLUE

Capacity: 113g | 4 oz

Package: 1 can in a box / 12-pack display / 72 carton

REA TAPE GLUE is nonpharmacological medical grade spray adhesive designed for use directly on the skin in conjunction with kinesiology tapes. REA TAPE GLUE improves kinesiology tape adherence on sweaty body parts, during extreme workouts and while swimming. Specially developed formula ensures that glue is gentle on skin, hypoallergenic, odorless and colorless. Spray package lets you use quantities as required so there is no waste.





REA TAPE COHESIVE BANDAGE

Size: 4.5m x 4cm | 4.5m x 7.5cm | 14ft 9in x 2in | 14ft 9in x 3in

Packing: 1 pc in blister | 10 pcs in middle box | 120pcs in carton

Size: 4.5m x 10cm | 14ft 9in x 4in

Packing: 1 pc in poly bag | 144pcs in carton

Fabric: non woven (latex)

Colours:

REA TAPE COHESIVE BANDAGE is an elastic bandage that provides support, compression and warmth for injured limbs and joints. It's a stretchy, flexible wrap that doesn't restrict movement. Cohesive bandage sticks only to itself, not to the skin, which makes it more comfortable to wear than adhesive tape especially when strapping hairy parts of the body. It is easy to tear by hand. Cohesive bandage is a very versatile tape with a multitude of potential uses - most popular being sports use and veterinary.



easy
hand tear



REA TAPE SPORT

Size: 10m x 3.8cm | 33ft x 1.5in

Fabric: 100% cotton

Colours: 

Package: 1 roll / 32-pack display / 192 carton

cast-like
support

REA TAPE SPORT is made from 100% cotton porous adhering zinc oxide material which is non elastic. REA TAPE SPORT is designed for maximum tackiness. This tape is not like generic brands on the market. REA TAPE SPORT unravels smoothly and consistently all the way to the core and tears easily by hand so you don't have to fumble with scissors. Any athletic trainer will be able to feel the difference in quality the second they start using it.



REA TAPE UNDERWRAP

Size: 27m x 7cm | 88ft 6in x 2.7in

Fabric: 100% medical grade polyurethane foam

Colours:  

Package: 1 roll / 6-pack display / 72 carton

ultra soft
touch



REA TAPE UNDERWRAP can be applied before a tape job to prevent chafing - ideal for sensitive skin. REA TAPE UNDERWRAP's high quality means it comes off the roll smoothly and conforms to the body part that is about to be taped. The thin lightweight foam provides a barrier between the skin and the tape in order to protect the skin from friction and chafing.



“

REA TAPE Power To Be Your Best

”

**GRAB
REA
MOBILE
APP**



REA TAPE

Join the community



/reatape



@reatape



@rea_tape

www.reatape.com

info@reatape.com

**Phone/WhatsApp:
+48 888 504 504**